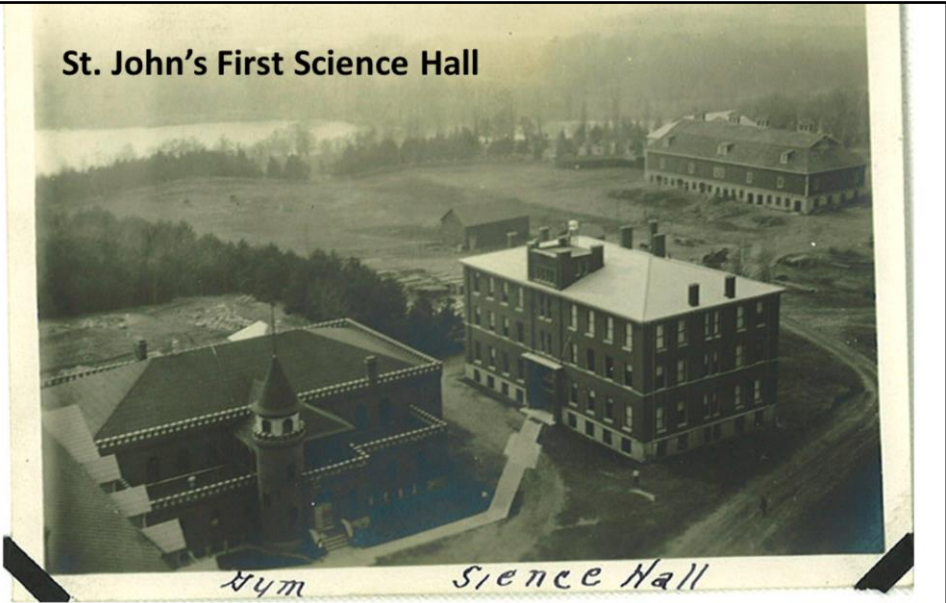
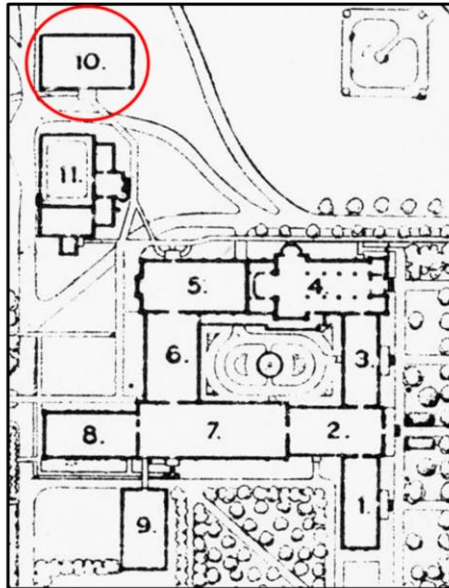


St. John's First Science Hall



Compiled in October 2010 from resources in the SJU Archives by
Peggy Landwehr Roske, CSB/SJU Archivist

The Science Hall (no. 10 on the [1915 map](#) below) was the first building for academics that was separate from the Quadrangle.



- 1 to 7 Main Building (Quad)
- 8. Luke Hall (built 1912)
- 9. Library (1901)
- 10. **Science Hall** (1910)
- 11. Gymnasium (1901)

The Record, March 1907, p. 149: A fundraising effort to commemorate St. John's 50th anniversary was announced:

We therefore urgently invite all, both past and present, to secure contributions for the BUILDING FUND OF SCIENCE HALL. Don't wait till the Alumni Meeting! You will be setting the example and helping the good cause along by sending a substantial check *now*, or a least a promise to send one later to the BUSINESS MANAGER OF THE RECORD.

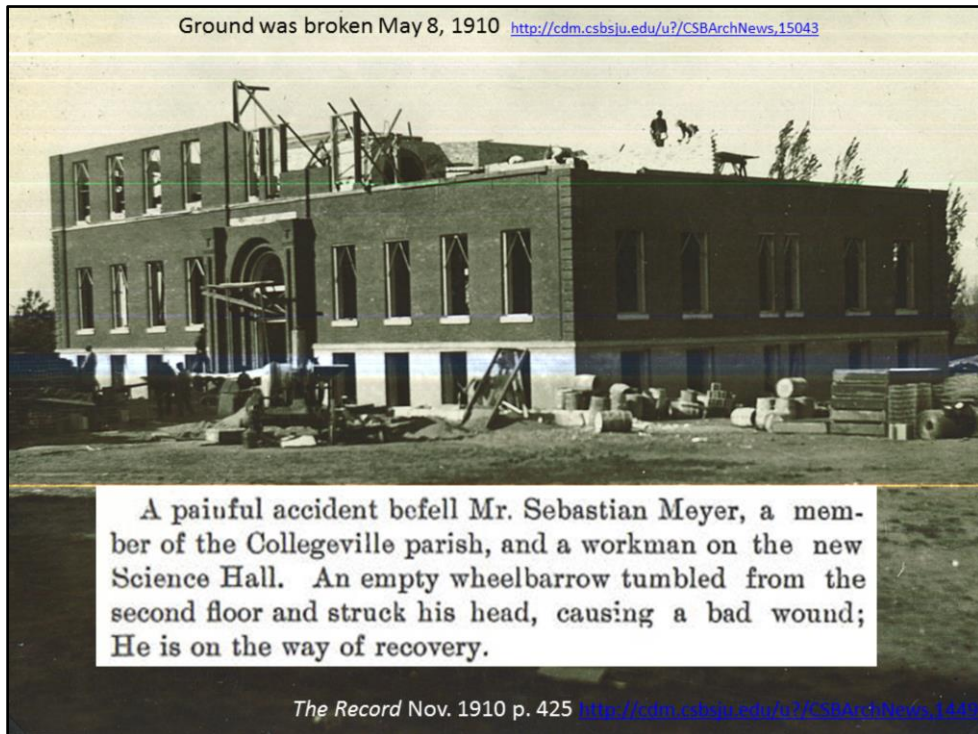
The Record, July 1910, p. 331:

May the new Science Building always harbor and foster a truly scientific and religious spirit and thus give a new expression to the old Benedictine motto "Ora et Labora."

But, back to the beginnings of what we know now as Simons Hall – when it was conceived as a badly-needed **Science Hall**.

Even one hundred years ago, donations from the alumni were financing construction projects on the campus.

2nd quote is from *The Record*, July 1910, p. 331.



1910. Ground was broken May 8, 1910: <http://cdm.csbsju.edu/u/?CSBArchNews,15043>
Accident report: *The Record* Nov. 1910 p. 425
<http://cdm.csbsju.edu/u/?CSBArchNews,14495>

Announcement

The Alumni Meeting, June 21 1911

Program

TUESDAY, JUNE 20.

- 10:00 p. m. Delegation from the East arrives.
Dutch Lunch.
- 11:30 p. m. Time to get to bed.

WEDNESDAY, JUNE 21

- 7:00 a. m. Breakfast.
- 8:00 a. m. Solemn Requiem Mass for Deceased Alumni
- 9:00 a. m. Dedication of the new Science Hall.
- 9:30 a. m. Visit to Old Haunts. Fishing, Boating, Swimming, Etc.
- 10:30 a. m. Concert by the U. Orchestra and social session
- 11:30 a. m. Preliminary Business Meeting.
- 12:00 m. Banquet.
- 1:30 p. m. Base Ball. Faculty vs. Alumni.
- 3:00 p. m. Concert and Social Session.
- 4:30 p. m. Business Session.
- 6:00 p. m. Supper.

The Record, June 1911, p. 273-5
<http://cdm.csbsju.edu/u/?CSBArchNews,15817>

<http://cdm.csbsju.edu/u/?CSBArchNews,15817> The Record 1911 June 1 p. 273-5

<http://cdm.csbsju.edu/u/?CSBArchNews,15818>

<http://cdm.csbsju.edu/u/?CSBArchNews,15819>

St. Ben's was still just a high school (Academy)—the College wasn't founded until 1913—but the St. Ben's students were impressed:

The Junior girls of St. Benedict's Academy made a visiting-tour to St. John's on the 3rd. The Science Hall proved to be the chief attraction for them and they think that "the place is just lovely."

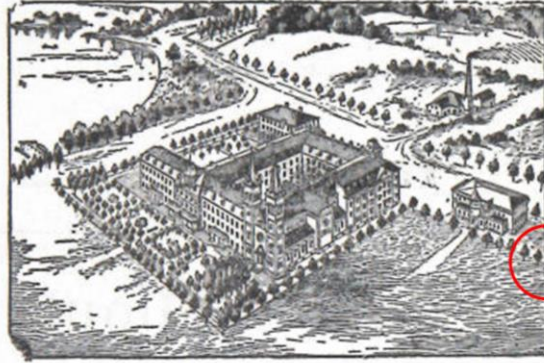
The Record Dec. 1, 1911, p. 474
<http://cdm.csbsju.edu/u/?CSBArchNews,16073>

<http://cdm.csbsju.edu/u/?CSBArchNews,16073> The Record Dec. 1 1911 p. 474

Ads for St. John's
bragged about
the new
science building
—but the
illustration didn't
include it!

From *The Record* July 1, 1915,
p. 428 of the suppl.
<http://cdm.csbsju.edu/u/?CSBArchNews,18306>

Founded in 1857 Conducted by Benedictine Fathers



OUR COURSES Typewriting, Shorthand, Preparatory, Commercial, Scientific, Classical, Philosophical, Theological,

FEATURES AND RATES Most Beautiful and Healthful Location. Two Lakes and Wooded Hills. Efficient Staff. Thorough Equipment. Modern Conveniences. Double Gymnasium. New Science Hall. Valuable Library and Museum.

Only \$250 per year. Equipment and board equal to that of any \$300 school.

<http://cdm.csbsju.edu/u/?CSBArchNews,18306> The Record July 1, 1915 p. 428 of the suppl.

NOTE that the Science Hall isn't even in the picture!

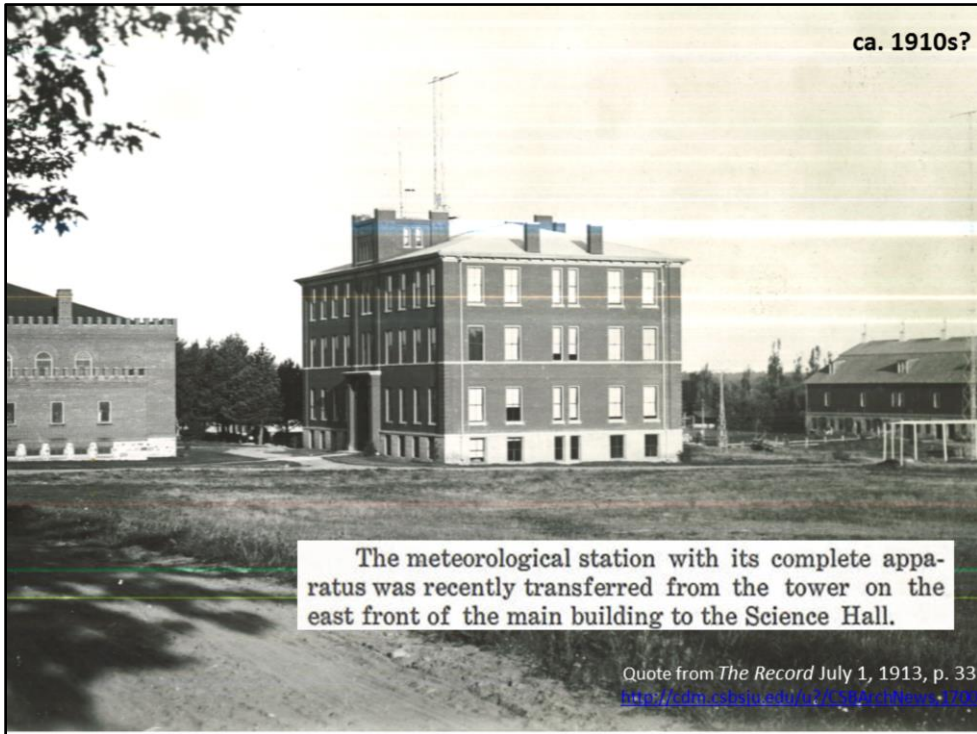
No date (photo is from a scrapbook)

This perspective shows how close together the gymnasium and the science hall were, at the beginning: You can understand why they moved the gym to the west!



No date – from a scrapbook

You can understand why they moved the Old Gym to the west!



1910s?

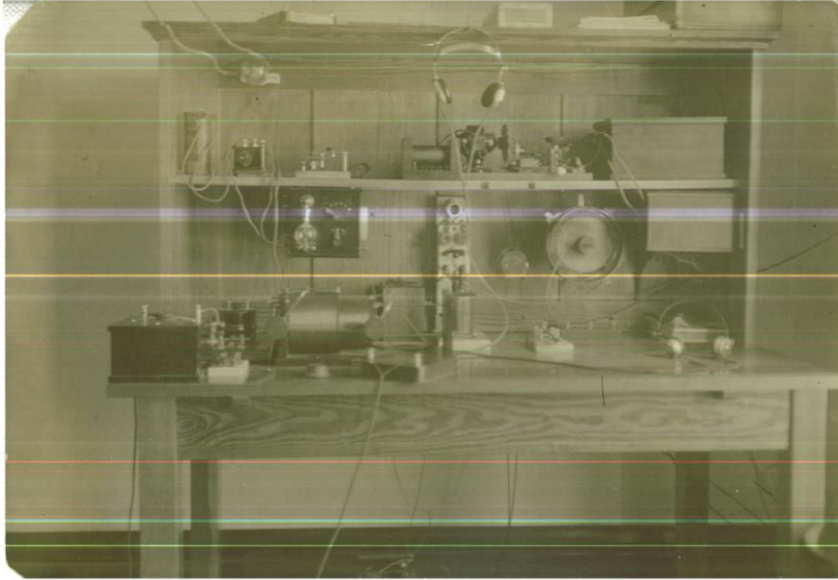
<http://cdm.csbsju.edu/u/?/CSBArchNews,17007> The Record July 1, 1913, p. 339



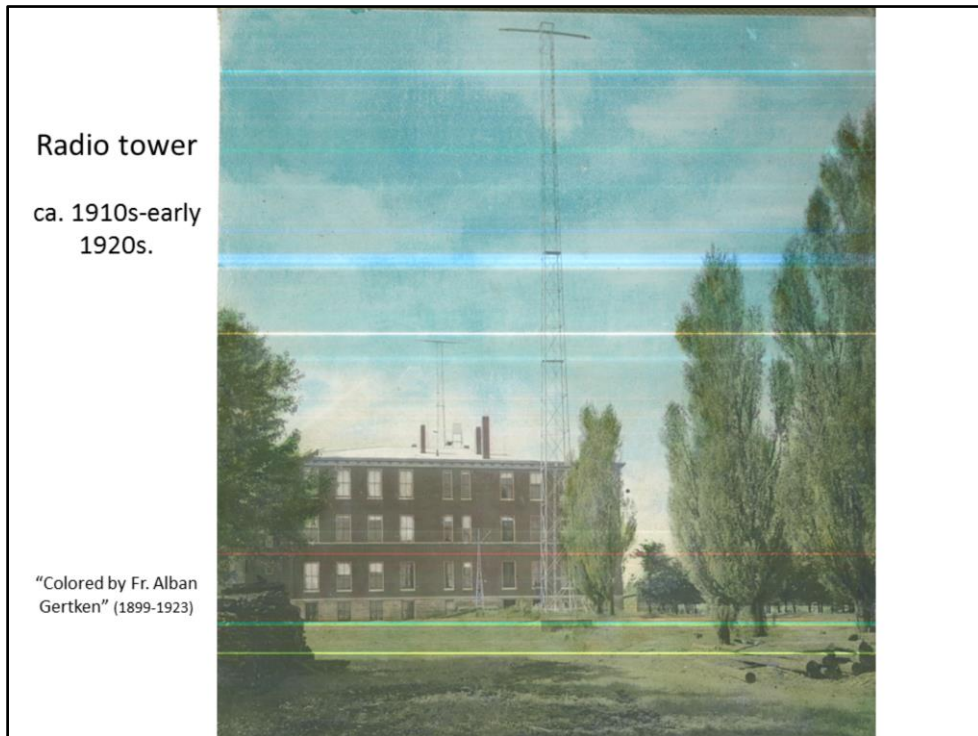
1915 postcard

1915 postcard

1st radio station - 1915



1st radio station - 1915



Ca. 1910s-early 20s. Radio tower – “Colored by Fr. Alban Gertken” (1899-1923)



"Chemistry Lab about 1918"



"Science Hall – Lecture Hall on 3rd floor – East End of Bldg. About 1918"

"Science Hall – Lecture Hall on 3rd floor – East End of Bldg. About 1918"

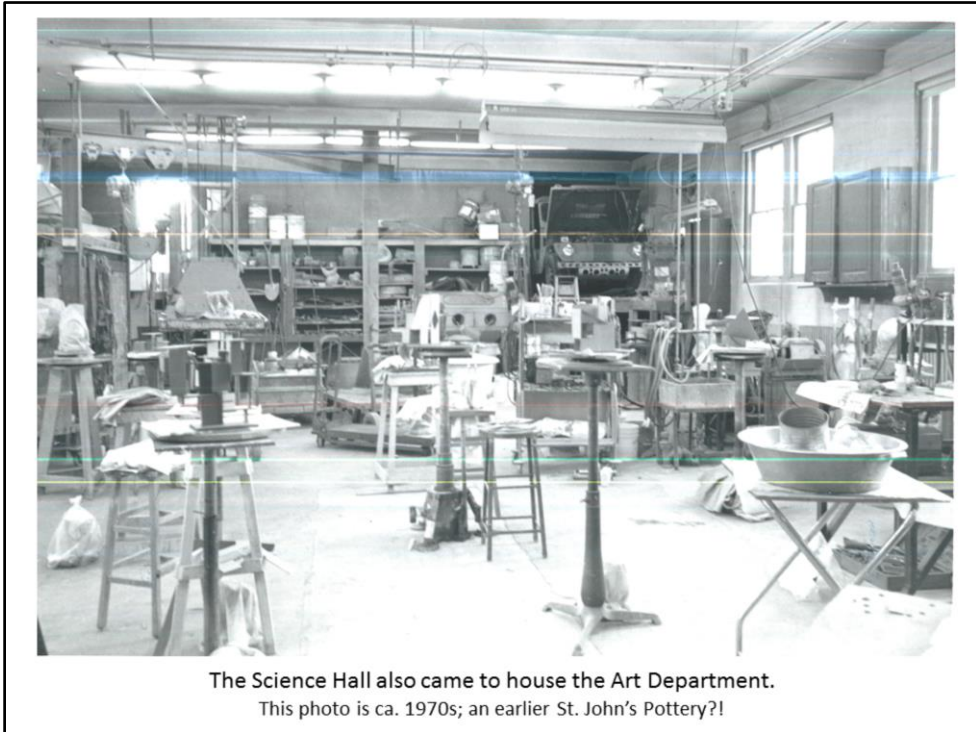


1940s



Architectural drawing was also offered at St. John's (photo undated)

Nd – the Science building also came to house the Art Department; architectural drawing was also offered at St. John's.



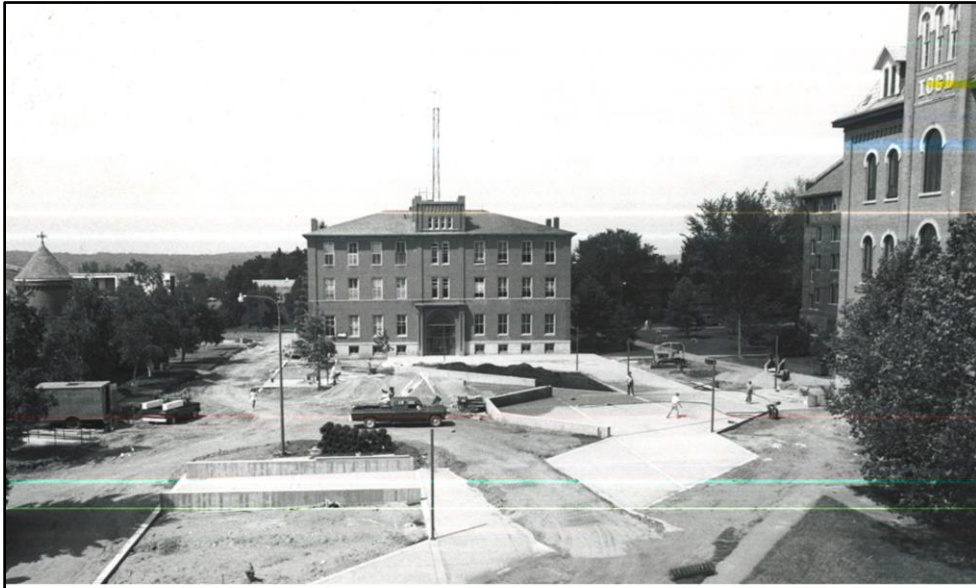
The Science Hall also came to house the Art Department.
This photo is ca. 1970s; an earlier St. John's Pottery?!

nd – Ceramics classroom; did Richard have classes here?



Art Gallery, ca. 1970s, 3rd floor(?)

nd – art gallery – 3rd floor?



1982 landscaping project

"7/20/82"



1989 renovation adds staircases and an elevator

1989

Engel nears completion



Engel Hall nears completion as the final touches go on the brand new elevator facility. Work on Engle Hall will be finished by the end of October. Across the campus, other construction projects are also in progress. (Photo by Dan Steger)

The Record Sept. 28, 1989, p. 4

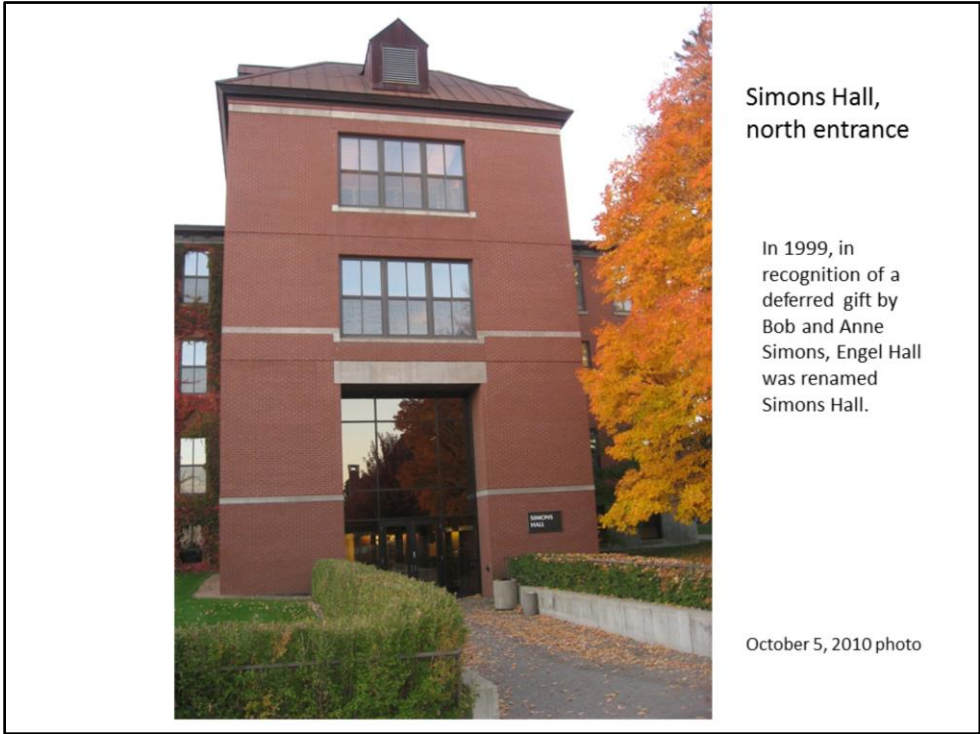
By Steve Perry

The Engel Hall renovation and the utility upgrade project are near completion, and SJU's new tennis courts now meet national tennis standards. Planning continues for the proposed campus center and art center, according to Gordon Tavis, OSB, SJU treasurer.

Renovations on Engel Hall will not be finished until the end of October, but the amount of work completed to date is a "minor miracle," said Tavis. Brickwork on the elevator/stair tower behind Engel will be completed in early October. The late arrival of certain roofing, lighting, and mechanical materials have caused only minor delays. By the end of October, installation of the elevator in the tower will mark the conclusion of the project.

"We knew from day one that we were asking the impossible. (The Engel Project) was more than anybody should have tried to do in a summer-time," Tavis recently stated. SJU's high expectations included remodeling ten classrooms and over three dozen faculty and departmental offices. The new Engel will also feature the elevator/stair addition, more restrooms, air conditioning and other utility improvements.

The Record Sept. 28, 1989, p. 4

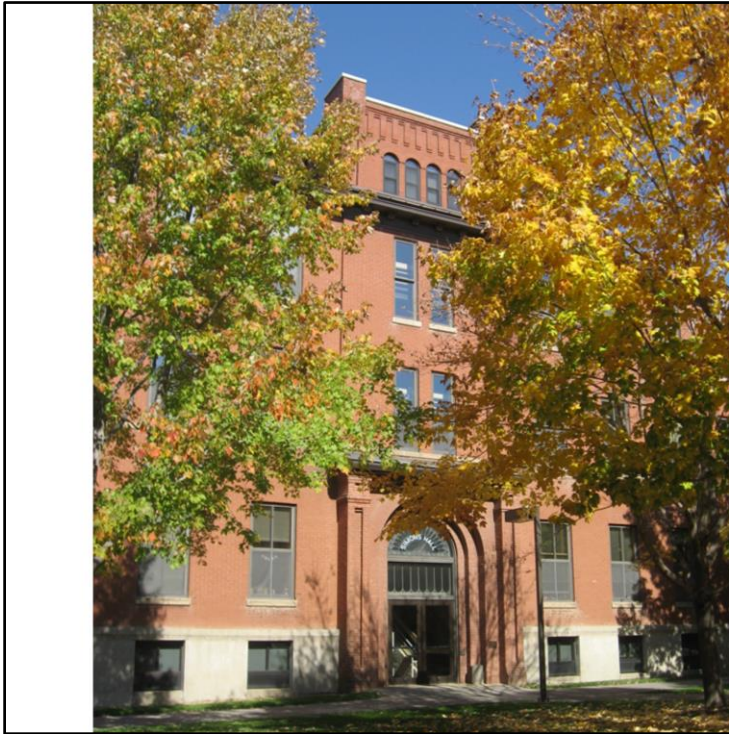


Simons Hall,
north entrance

In 1999, in
recognition of a
deferred gift by
Bob and Anne
Simons, Engel Hall
was renamed
Simons Hall.

October 5, 2010 photo

Tuesday 10/5/2010



Simons Hall,
south entrance

October 5, 2010 photo

Compiled in October
2010 by Peggy
Landwehr Roske,
CSB/SJU Archivist, from
resources in the
St. John's Abbey and
University Archives

Friday, 10/8/2010