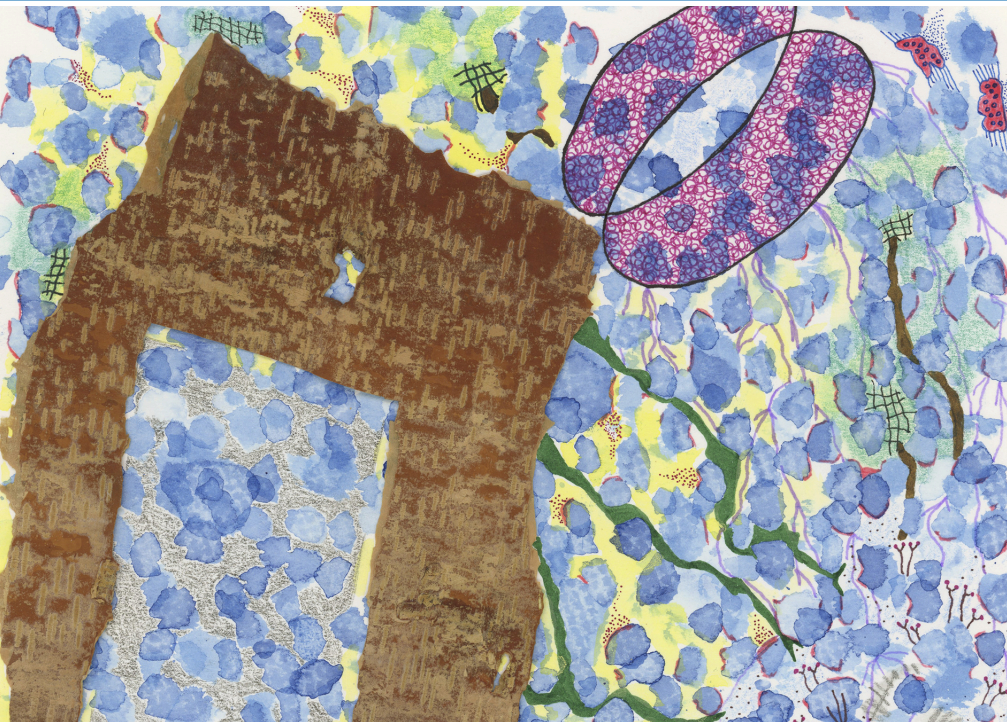


# Do Not Bend

## Kiera Faber and Jes Reyes



October 22 - December 4, 2024

Alice R. Rogers and Target Galleries SJU

Gallery Hours: Tue-Thu: 2 - 8 pm Fri & Sat: 2 - 6 pm

Collaborating multi-media artists, Kiera Faber and Jes Reyes, orchestrate visual dialogues that embrace vulnerability and trust whilst exploring implied narratives of loss, uncertainty, and the complexities of the natural world. Their interdisciplinary artist process delves into finding the self through translation and mitigating the blurred distinction between enmeshment and connectivity through discovery, surprise, and curiosity.

## CONNECT

TOPICS AND THEMES THIS EXHIBITION ENGAGES WITH:

- Vulnerability
- Risk
- Creative Conversation
- Memory
- Experimentation
- Collective Iconography
- Surprise
- Interconnectivity

## ONLINE RESOURCES

<https://www.csbsju.edu/fine-arts/visual-arts/>

[kierafaber.com](http://kierafaber.com)

[jesreyes.com](http://jesreyes.com)

## ENGAGE

Kiera and Jes reached out to one another for connection and community during the beginning of the COVID-19 pandemic. A time of isolation, fear, and great uncertainty, the artists described their relationship as, “We had never created artwork together before, but knew each other professionally. We took a risk and invited each other to be BRAVE and embark on the experiment that blossomed into *Do Not Bend*. As artists, sometimes it can be easy to second guess ourselves; instead, we trusted our intuitive curiosities to foster novel discoveries.”

- How can you embrace vulnerability and risk-taking for growth?
- How can creation of art help to express things that are hard to put into words?
- What new information about yourself and others can be learned through being uncomfortable?

When the project began, the artists lived two hours apart from each other. Jes and Kiera started by collaborating and sending artwork back and forth through the US Postal Service. “We would write in bold letters DO NOT BEND on each envelope to prevent our artwork from getting damaged in the mail.” The phrase makes the viewer think about the materials and media used in the work and also lends itself to protections against insecurities.

- Artworks in the exhibition are both collaborative pieces and works made by just one of the artists. What relationships are formed between the collaborative and independent works? How do they inform and influence one another?
- Beyond the words and poetry, in what way do you see conversations happening?
- How does the exhibition activate your senses as you engage with the multiple mediums?
- How have the artists used color, size and materials to draw the viewer into the works? What feelings and emotions do you sense from the works?