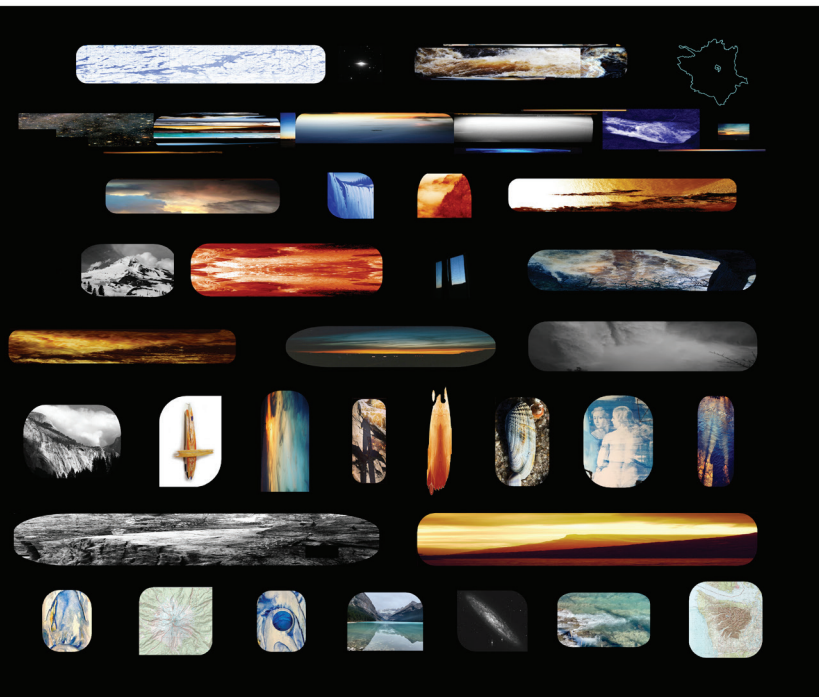


WAYFARER



September 5 – October 14, 2023

Alice R. Rogers Gallery and Target Gallery
Saint John's Art Center

Informed by recent travel to the Pacific Northwest, the Canadian Rockies, and the North Shore of Lake Superior, Wayfarer by Cameron Zebrun, explores the artist's interests in creating objects of fine craftsmanship that illustrate a preoccupation with presenting landscape subject matter in surprising and non-traditional ways.



This show qualifies as an Artistic Engagement event! Scan the QR code for instructions on how to earn your credit.

CONNECT

TOPICS AND THEMES THIS EXHIBITION ENGAGES WITH:

- Collage
- Photography
- Mapping
- Live Courageously
- Sensory Memory
- Exploration
- Environment
- Travel

ONLINE RESOURCES

cameronzebrunart.com

csbsju.edu/fine-arts/visual-arts/wayfarer

kolmanreebgallery.com

csbsju.edu/news/cam-zebrun-wayfarer-2023

ENGAGE

Much of Zebrun's work involves exploration and documentation. He uses photography to visually document his travels. Through sensory memory he selects images for his finished work that best demonstrate the emotional experiences and responses to places he has visited.

- How are Zebrun's personal experiences exploring the environment shown in his work?
- What role does natural history and science play in the work you see in the show?
- How does the work create narrative out of visual images? What types of stories do you see in the work?
- How does Zebrun's work reference landscape?

As an artist, Zebrun's work often transcends categorization. Often using tools such as CAD software to assist in the design of the work before the building process even begins, Zebrun's work floats between sculpture, collage, painting and digital.

- How do the elements of design play into the way Zebrun creates his work?
- Why is fine craftsmanship important in the presentation of work?
- Topographical shapes appear in the work and bring about feelings of depth, rhythm and texture. How does collage and mixed media add to the storytelling in the work?
- Are the same images used more than once in the show? Why do you think the artist chose to do this?

Wayfarer recreates the emotions and experiences the artist felt and turns them into visual objects. "I record the intimate patterns and forces that nature enacts on the environment" stated Zebrun.

- What connections do you draw as a viewer between the sculpture and collage?
- What role does color play in art? How do the colors in this work make you feel?
- As you walk through the show, what types of emotions or feelings do you experience?