

CSB/SJU ENROLLMENT PARTNERS

A MONTHLY REVIEW FOR OUR VOLUNTEERS



MORE INSIDE THIS NEWSLETTER

New Admissions Colleagues-2

Upcoming Enrollment Partner Events-3

Campus News and Updates- 4

COVID-19 UPDATES

and the mandated vaccination policy

This fall the College of Saint Benedict and Saint John's University required all students, faculty and staff to be fully vaccinated, with at least one vaccine dose having been administered before returning to campus for fall semester (Aug. 24 for employees and Aug. 26 for students). These policies and protocols are based on recommendations from the Centers for Disease Control and Prevention (CDC), Minnesota Department of Health (MDH) and American College Health Association (ACHA). Currently, 87% of our students are vaccinated, with 3% of the 87% only having their first dose. Furthermore, 89% of our staff members are vaccinated, with 2% of the 89% only having their first dose.

The College of Saint Benedict and Saint John's University had a temporary masking mandate. However, as of October 2nd, masks are encouraged by not required in most areas on campus. Masks are required in classrooms, on buses, public transportation, and in counseling and health services (due to federal regulations), in our large performance venues, and for unvaccinated visitors indoors.

Community
ALWAYS

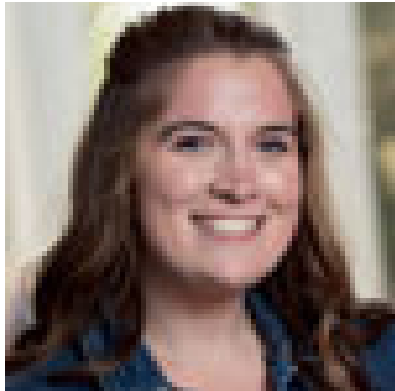


10TH DAY NUMBERS

The following numbers reflect our first-year enrollment after the second week of classes:

Entering Student Profile

Number enrolled CSB:	389
Number enrolled SJU:	410
Transfer/Readmit students:	68
International Students	18
Average ACT CSB:	23.8
Average ACT SJU:	24.8
Mean HS GPA CSB:	3.72
Mean HS GPA SJU:	3.51



NEW ADMISSION COLLEAGUES

Meghan Stordahl-

- **Territory:** Twin Cities
- **Hometown:** Litchfield, Minn.
- **High School:** Litchfield High School
- **College:** 2020 College of St. Scholastica graduate
- **Major:** Psychology Major



Mikayla VonWahlde-

- **Territory:** Southern Minnesota, South Dakota
- **Hometown:** Freeport, Minn.
- **High School:** Melrose Area High School
- **College:** 2021 CSB/SJU graduate
- **Major:** Communication



Aiden Lorentzen-

- **Territory:** Twin Cities (West/Southwest Metro)
- **Hometown:** Brooklyn Park, Minn.
- **High School:** Osseo Senior High
- **College:** 2020 CSB/SJU graduate
- **Major/Minor:** Political Science Major/ Hispanic Studies Minor

ALUMNI REFERRAL NUMBERS FROM LAST YEAR

and promotional dates for this year!

As many have read, our Referral Day Challenge was a great success last January, and that success continued into the matriculation phase of the program. Of the **263** accepted seniors who were referred between Jan. 7 and 17, **107** enrolled as first year students for a yield rate of **41%**. That is an amazing statistic and shows how effective your referrals can be. Of note, 30 of those 107 first years were legacy students who received the Legacy Scholarship instead of the Alum Referral Scholarship so **28%** had a parent or grandparent who is an alum. Of those who had not yet applied, during that time frame, 6 ended up applying, and 2 of those matriculated.



UPCOMING ENROLLMENT PARTNERS EVENTS!

ADOPT-AN-ACCEPTED STUDENT

This program matches our Enrollment Partners with an accepted student by major, hometown, high school attended, or randomly. Making connections with these students is an important part of the recruitment process. An email to EP members will go out in late October with more details

ALUM AMBASSADOR OUTREACH

Those EP members who chose this activity to participate in will update a script and personalize it for accepted students who have expressed an interest their pre-professional program or major. The Admission Office will send those emails to the students and our volunteers will follow up with any student who responds. Those emails will go out in late November.

CARD WRITING

Alum volunteers, many, but not all of whom are Enrollment Partners, will hand write notes to up to 15 accepted students. Pre-pandemic, the group would gather at a location in the Twin Cities early December, and another group in early February to enjoy a beverage and comradery with friends as they pen their notes. This activity can be done remotely from home as well.



CAMPUS NEWS AND UPDATES

NEW ENGINEERING AFFILIATION WITH WASHINGTON UNIVERSITY IN ST. LOUIS!

CSB/SJU has entered into a new relationship with Washington University in St. Louis for students who are interested in continuing their study of engineering and seeking a BS, Masters or PhD in any number of engineering fields. Stay tuned for more information on this program. It will be coming to the website soon.



NEW SCHOLARSHIPS FOR WOMEN IN STEM AND LEADERSHIP!

This STEM Scholarship is an exciting opportunity for all four years of study intended for new-entering female students who plan to pursue one of the STEM majors offered at CSB/SJU: Biochemistry, Chemistry, Computer Science, Mathematics or Physics. In order to maintain this scholarship the student will need to remain in a STEM major year-to-year at CSB.



The College of Saint Benedict designs programs to meet the needs and aspirations of women, emphasizing leadership and a personal development profile that includes intellectual, spiritual, emotional and physical development. Our values-based and value-added residential liberal arts education provides the framework for fulfilling lives of disciplined inquiry and leadership in careers devoted to the professions, public life and service to others.

NEW MULTICULTURAL CENTER GRAND OPENING!

Within the past month, the College of Saint Benedict and Saint John's University opened up the brand new Multicultural Center! The Multicultural Center made its debut with a pair of openings Sept. 23-24. A celebration was held Sept. 23 with members of the CSB and SJU Board of Trustees in attendance, with a student opening on Sept. 24. While the Multicultural Center – located in Murray Hall – is open to anyone, it is designed to be a home for historically underrepresented students on each campus.

